

CORKU

EMPOWERING OUR PARTNERS

PRODUCTS : LEVEL 200

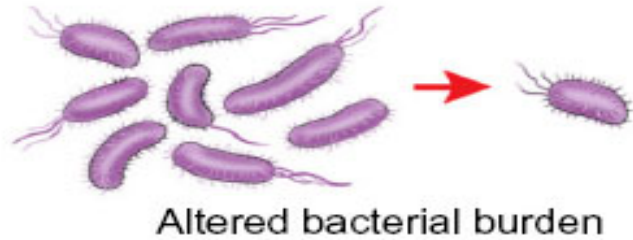


NISUS PUMP
NEGATIVE PRESSURE
WOUND THERAPY **TRAINING**

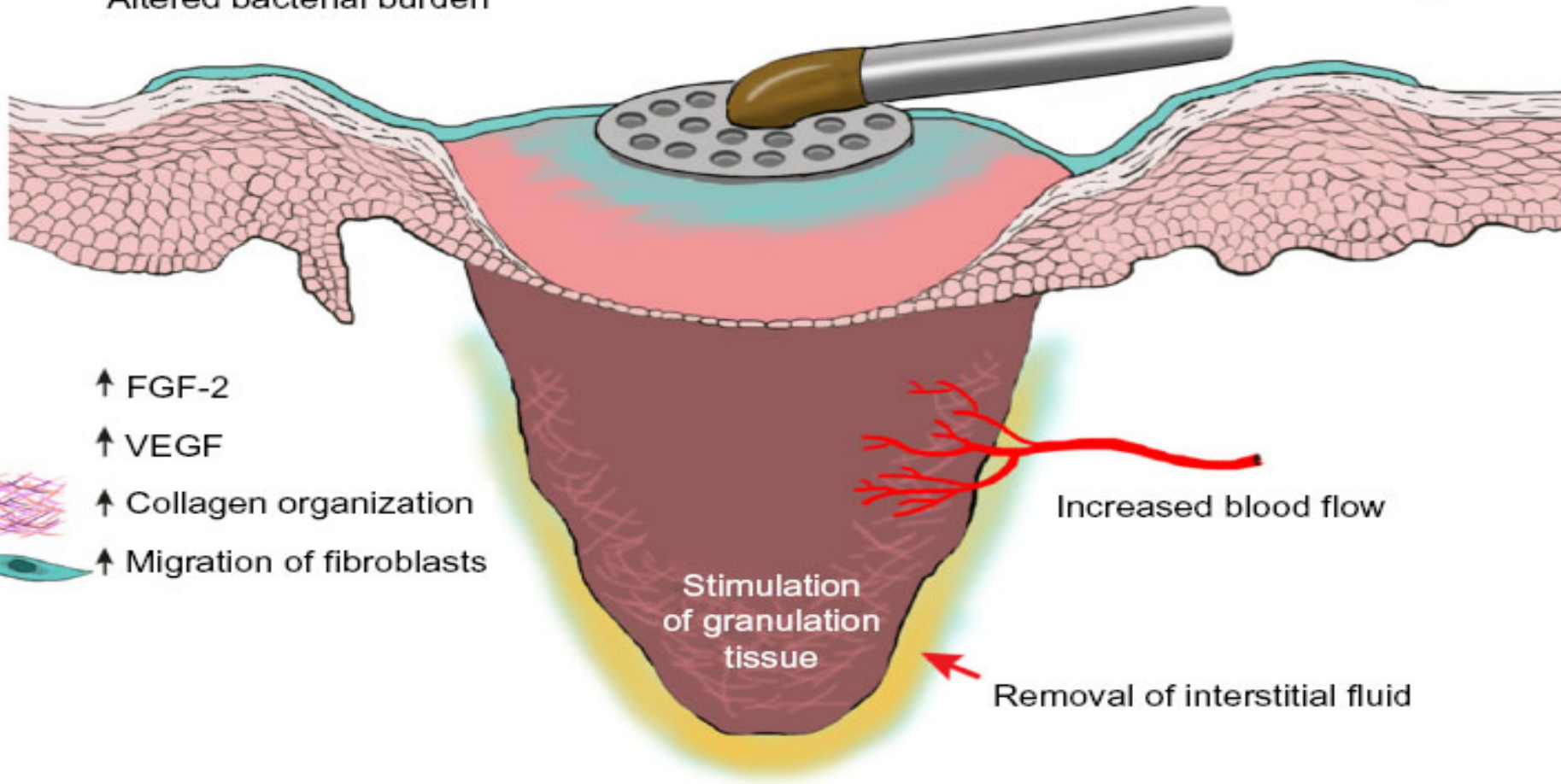
HOW TO APPLY A NPWT DRESSING

PRODUCTS : LEVEL 200

SLIDE 2



Pressure gradient results in wound deformation which stimulates tissue remodeling



Apply skin prep

03/04/2015



Fill each wound with NPWT foam



03/04/2015



03/04/2015

Apply a layer of NPWT drape to the skin between the two wounds.

This will protect the skin from irritation when we "bridge" them together using another piece of foam.

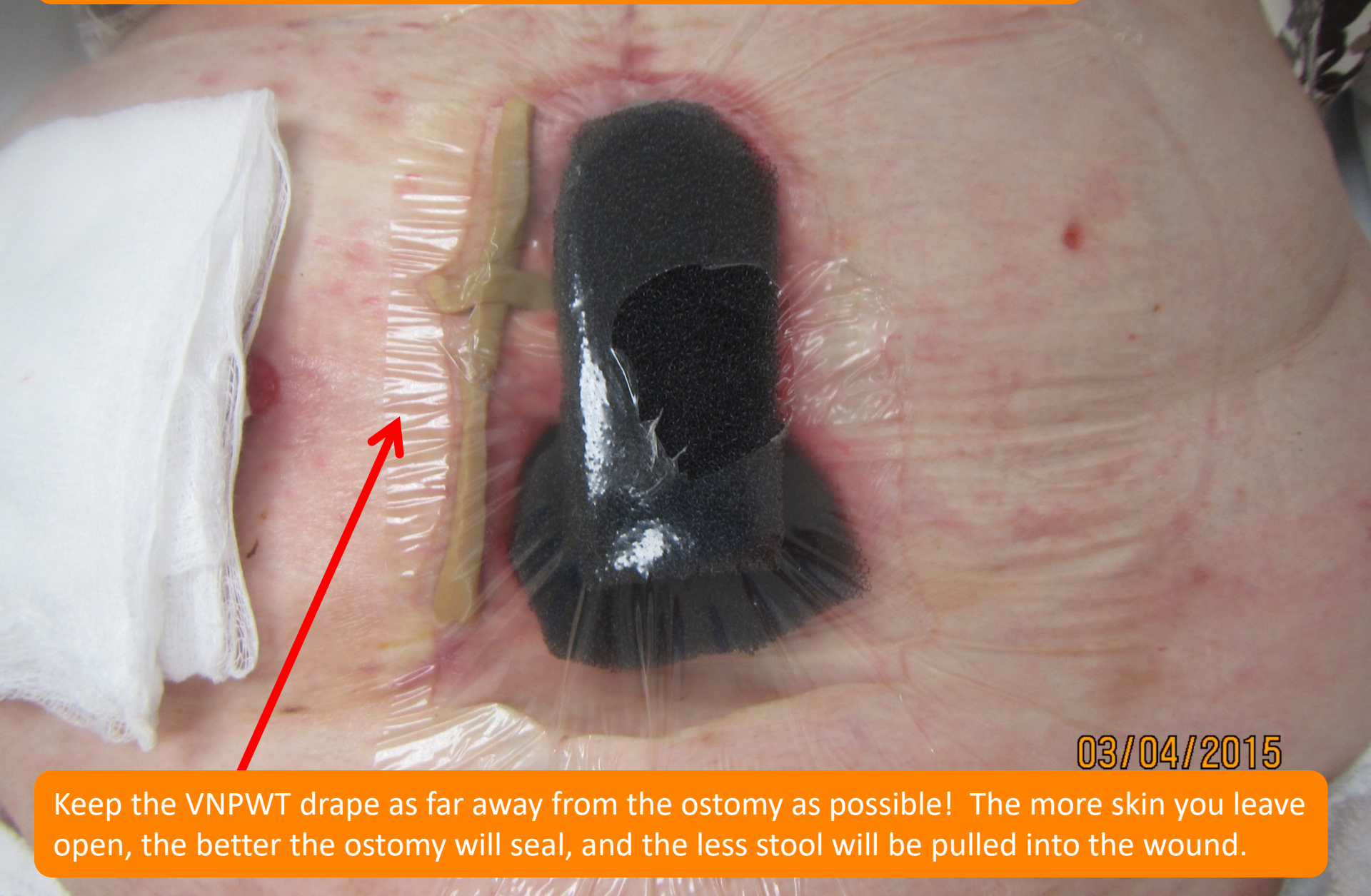
You cannot put the suction disc directly on her skin! It causes a "hickey" and skin irritation.

Place a bridge of foam to connect the two.

The suction disc goes on top of that.

03/04/2015

Use one more piece of black foam to "bridge" the two wounds together. Cover with NPWT drape.



03/04/2015

Keep the VNPWT drape as far away from the ostomy as possible! The more skin you leave open, the better the ostomy will seal, and the less stool will be pulled into the wound.

Apply the ostomy appliance

03/04/2015

Please call Cork Medical at 1-866-904-2946



DRESSING KITS

PRODUCTS : LEVEL 200

SLIDE 9



- ❖ The outer pouch contains dressing instructions
- ❖ This allows a patient/clinician the ability to read on how to apply the dressing
- ❖ The port pad, drape, and foam is individual packaged and sterile
- ❖ This is a ruler in each kit
- ❖ Each item is individually packaged and sterilized

SIZES OF KITS (OUTPATIENT)

PRODUCTS : LEVEL 200

SLIDE 11

- ❖ **Small kits:** sent out on subsequent months of approvals, unless rep states in approval that large kit is still indicated. This kit has a medium foam and only one piece of drape.
- ❖ **Medium kits:** Medium piece of foam, port pad, and two pieces of drape
- ❖ **Large kits:** Large piece of foam, port pad, and two pieces of drape

SIZES OF KITS (FACILITIES)

PRODUCTS : LEVEL 200

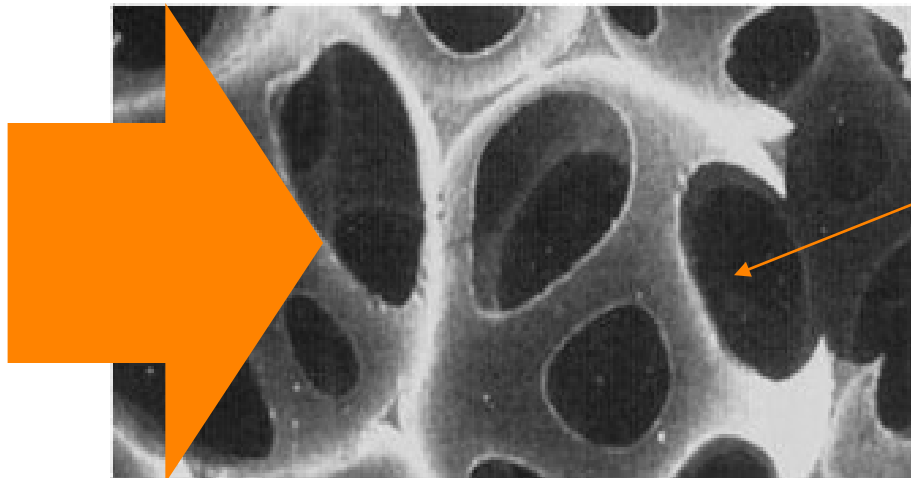
SLIDE 12

- ❖ **Medium kits:** Medium piece of foam (3/4 inch thick), port pad, and two pieces of drape
- ❖ **Medium thick kits:** Medium thick piece of foam (1.25 inches thick), port pad, and two pieces of drape. Used for wounds with an increased depth.
- ❖ **Large thick foam:** Large piece of foam (3/4 inch thick), port pad, and two pieces of drape
- ❖ **Bridge Accessory:** This allows for a quick bridge from a pressure point. This will only be available to facilities.

- ❖ Port pad is constructed of a high durometer silicone
- ❖ This high durometer decreases the chance of kinking the tubing
- ❖ The use of silicone decreases the incidence of a device related pressure injury
- ❖ Low profile port pad design (The Hoosier Dome)
- ❖ Internal structure of the port pad ensures that the port pad does not collapse
- ❖ This internal structure allows flow of exudate into the tubing
- ❖ Quick leur lock connector to the port pad tubing

- ❖ Hydrophobic foam
- ❖ 30-35 PPI
- ❖ 400-600 micron opens
- ❖ This is why we have a higher tensile strength (This is why our foam does not flake)
- ❖ Our medium foam is 25% larger than most competitors

PPI refers to how many pores are per square inch



Micron is how big the pore size is

- ❖ Industry standard of application (1,2,3)
- ❖ Able to cut the drape in two directions
- ❖ The drape will not delaminate when cut
- ❖ Excellent adhesive properties (Peel Test)
- ❖ Adhesive is acrylic non-solvent based (decrease incidence of an allergic reaction)
- ❖ Each kit comes with 2 pieces of drape
- ❖ **Semi-Permeable Drape**- Allowing air to pass through the drape to prevent Maceration.
- ❖ Every drape is semi-permeable to a certain extent. The extent to which a drape's semi-permeability is measured is by deciliters over a 24 hour period. The breath rate of our drape is about 900-950 dL per 24 hours. Most drapes are around the 500 dL level.

BRIDGE KIT DRESSING

PRODUCTS : LEVEL 200

SLIDE 16

- ❖ Facility sales only!!!
- ❖ This allows for a quick bridge from a pressure point
- ❖ This accessory saves the facility time



- ❖ The ability to connect two wounds together
- ❖ Recommendation for Y connecting is that the wounds have the same etiology
- ❖ The wounds require the same pressure setting
- ❖ The Y connectors are changed weekly

QUESTIONS?

PRODUCTS : LEVEL 200

SLIDE 18